

"The Potter shapes  
*both* clay and calling;  
The Shepherd  
molds both *heart*  
and *hand*"

The Oikos Fellowship  
**ANNUAL  
REVIEW  
2024**

[WWW.7MODALITIES.COM](http://WWW.7MODALITIES.COM)

# A Year *in Review*

As I reflect on our ministry's journey, I am struck by a fundamental question: How do we best steward our resources in bringing Christ's transformative love to our neighbourhoods?

This question has led us to examine the comparative costs between reactive and preventive measures in our community work. While our presence in areas like Geylang and Kukoh requires significant investment, we've discovered wisdom in shifting our focus toward prevention rather than reaction.

One of our church governors in public policy noted "For crime as a whole, my guess is that there is some efficiency in bringing crime down to a particular level but the cost savings would start to decrease once you try to stamp out the "last mile" of crime.



And then ensuring 100% no crime would be astronomically costly. Same for healthcare ("100% no disease") or social services ("100% no broken families")."

The transformation in Singapore over five decades stands as a testament to God's faithfulness. That this neighbourhood can proclaim "God is Good all the time" is indeed miraculous. Yet our vision extends further – we long for the day when children in these communities can also say with confidence, "Dad is Good all the time," witnessing faithful fatherhood both in their homes and workplaces.

This journey reminds us that God's work often moves us from addressing symptoms to healing root causes, from reaction to prevention, from crisis intervention to family restoration. As we continue this work, we remain committed to wise stewardship of our resources while trusting in God's abundant provision for the transformation of our community.

*Rev. Gerard Sew*

Senior Pastor



# Thriving in the Romans 12:6-8 World



## Historical Foundations

Our journey began in 1995 with an exploratory mission to Chiang Mai, initially focusing on outreach to Thai construction workers. While language barriers presented challenges, this experience led to a pivotal partnership with Dr. Preecha, whose expertise as a former royal advisor, family court judge, and senior lecturer at CMU has proven invaluable. Through divine guidance, our mission subsequently redirected to the Philippines, where we established deep connections within barrios and provincial areas—a focus that continues to shape our core ministry today.

## CNX Accelerator

Explore this report on the 2023 CNX Accelerator (click the image for the link) for an overview of our mission, identity, and goals in King's College's 5-year educational journey.



## Current Strategic Framework:

### *The Seven Gates Model*

Our ministry operates through a comprehensive framework based on Romans 12:6-8, structured around seven key areas of engagement - the Seven Gates. Each gate represents a vital sphere of influence where we seek to cultivate and deploy spiritual gifts:

1. Gate of Envisioning (Arts & Ideology) - Nurturing creativity and cultural expression
2. Gate of Peace (Civil Society) - Fostering excellence in community engagement
3. Gate of Truth (Education & Research) - Creating environments for knowledge sharing
4. Gate of Influence (Media & Tech)- Bridging physical and digital communications
5. Gate of Multiplication (Business & Finance) - Developing strategic wisdom in resource management
6. Gate of Power (Government & Law) - Implementing effective governance and coordination
7. Gate of Life (Family & Monogamy) - Strengthening intergenerational bonds and relationships

## Vision Forward

Our strategic direction focuses on the holistic development of these seven spheres, recognizing that thriving communities require active engagement in each area. We are particularly emphasizing:


- Integration of academic excellence through our online university initiatives
- Strengthening our educational framework through the CNX Accelerator program
- Deepening community impact through systematic implementation across all Seven Gates
- Maintaining adaptability to meet evolving community needs while staying true to our foundational principles

This comprehensive approach ensures we remain faithful to our calling while actively responding to contemporary challenges and opportunities for kingdom impact.

### Preceptorship Values at the Seminary Gate

	<p>Gate of Envisionment <b>ARTS &amp; IDEOLOGY</b></p> <p>Meta-structure of Arts and ideology in creative environment, identity and culture formation</p>	<p>Genius of the <b>EYE</b></p> <p>Excels at discovering mysteries, connecting dots, and broadcasting innovative ideas to push boundaries.</p>	<p>Re-imagining the <b>FUTURE STATE</b></p>
	<p>Gate of Peace <b>CIVIL SOCIETY</b></p> <p>Meta-structure of Civil Society founded in racial, religious, social communities &amp; compacts</p>	<p>Genius of the <b>HAND</b></p> <p>Excellence in community engagement - corresponds to Civil Society, focusing on relationship-building and social welfare.</p>	<p>Re-configuring the <b>EKKLESIA</b></p>
	<p>Gate of Truth <b>EDUCATION &amp; RESEARCH</b></p> <p>Meta-structure of Education and Research in the development of knowledge fields</p>	<p>Genius of the <b>EAR</b></p> <p>Listening and understanding - aligns with the Education sector, creating environments where knowledge and thinking thrives, and culture is transmitted across generations.</p>	<p>Re-imagining the <b>RESEARCH</b></p>
	<p>Gate of Influence <b>MEDIA &amp; TECHNOLOGY</b></p> <p>Meta-structure of Media &amp; Technology in teh convergence of physical and digital worlds</p>	<p>Genius of the <b>TONGUE</b></p> <p>Communication and influence - aligns with the Media &amp; Tech space, shaping narratives and realities and building trust within communities.</p>	<p>Re-imagining the <b>TECHNOLOGY</b></p>
	<p>Gate of Multiplication <b>BUSINESS &amp; FINANCE</b></p> <p>Meta-structure of Business and Finance in economic production, trade &amp; market growth</p>	<p>Genius of the <b>NECK</b></p> <p>Wisdom and strategic thinking - maps to the Business &amp; Finance sector, where strategic vision and coordination of connected systems and resources create economic growth.</p>	<p>Re-imagining the <b>MONEY</b></p>
	<p>Gate of Power <b>GOVERNMENT &amp; LAW</b></p> <p>Meta-structure of Government &amp; Law in the administration and leadership of a commonwealth</p>	<p>Genius of the <b>HEAD</b></p> <p>Connection and leadership - corresponds to Government &amp; Law, where levers of power are harmonised to maintain order and create positive conditions for societal advancement.</p>	<p>Re-imagining the <b>POLITICS</b></p>
	<p>Gate of Life <b>MARRIAGE &amp; FAMILY</b></p> <p>Meta-structure of social fabric that extends inter and intra-generationally flowing across time and talent zones</p>	<p>Genius of the <b>HEART</b></p> <p>Love in the home between fathers and sons, mothers and daughters and between marital relations in all nations and across the generations - corresponds to Marriage and Family.</p>	<p>Re-imagining the <b>MONOGAMY</b></p>

Explore more:

 <https://tinyurl.com/KC-DAVT>

# *Study Accelerators*

Transforming Christian higher education through real-world learning experiences that equip students to serve their communities.



**Explore more:**

 <https://tinyurl.com/X-celerator>

# Hanoi Accelerator



This year marks the launch of the HAN Accelerator, a pioneering shift in theological education set in the scenic West Lake district of Hanoi, Vietnam, from March 25th to March 29th. Hosted by Rowena Law-agey and her dedicated team of English majors, this innovative program invites attendees to a rigorous 100-hour study experience designed to redefine theological studies for the future.

The HAN Accelerator's core mission is to reimagine the existing M.A. Graduate School curriculum, making it responsive to future technologies and the evolving intersections of media, education, and culture. The program implemented the Challenge-Based Agile Management (C-BAM) methodology, encouraging a self-directed and collaborative

learning environment where students can engage deeply with complex theological concepts in a rapidly changing world.

Notably, participants who completed the full 100-hour program were eligible for academic scholarships. This ambitious initiative signals a transformative step toward a new model of theological education, merging tradition with forward-looking innovation to shape the future of ministry and scholarship.



Our church marked a significant milestone with the First Malaysian C-BAM (challenge-based agile management) course, held from April 16-19, 2024, in Cameron Highlands. This unique program blended aviation principles with Christian learning, drawing parallels between “slow flight”—the disciplined, gradual approach in aviation—and effective methods for spiritual growth. By applying the controlled, steady focus of slow flight, the course aimed to strengthen participants' spiritual and practical ministry skills through a thoughtful, purposeful approach to learning.

### **Course Overview**

The course featured modules that drew parallels between aviation and learning, using self-directed readings, interactive activities, group discussions, and reflective assignments to encourage participants to progress steadily and avoid common pitfalls.

# First *Malaysian* Challenged- Based Agile Management Course in Cameron Highlands

## Core Modules Included:

### 1. Common Errors & Corrections

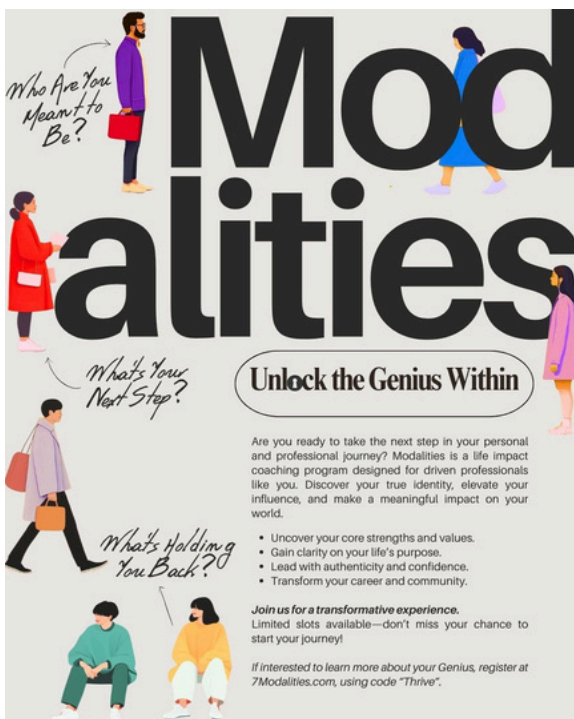
Participants identified frequent mistakes in learning—like rushing without understanding—and practiced techniques to overcome these for lasting growth.

### 2. Efficiency in Learning

Focusing on "efficiency at low speeds," participants learned strategies to make their learning journey productive without sacrificing depth.

### 3. Learning Dynamics

Examining factors such as motivation and environment, participants explored how these elements influence the effectiveness of learning.



**Modalities**

Who Are You Meant to Be?

What's Your Next Step?

What's Holding You Back?

**Unlock the Genius Within**

Are you ready to take the next step in your personal and professional journey? Modalities is a life impact coaching program designed for driven professionals like you. Discover your true identity, elevate your influence, and make a meaningful impact on your world.

- Uncover your core strengths and values.
- Gain clarity on your life's purpose.
- Lead with authenticity and confidence.
- Transform your career and community.

Join us for a transformative experience. Limited slots available—don't miss your chance to start your journey!

If interested to learn more about your Genius, register at [7Modalities.com](https://7Modalities.com), using code "Thrive".

## Highlights of the Journey

The course included impactful site visits:

Cameron Highlands Field Trip and Mossy Forest in Brinchang introduced participants to resilience and growth in natural settings.


Journey to Kajang AG underscored learning as a continuous journey.

Debrief at MKH Boulevard offered reflective discussions on integrating lessons into ministry.

The accompanying 7Churches Study Accelerator, a 100-hour module, further emphasized slow, steady learning and agile project management principles, guiding participants to align their actions with mission goals.

Through this first Malaysian C-BAM, participants learned to apply "slow flight" principles to ministry, balancing patience, discipline, and commitment on their spiritual path.

## Explore more:

 **YouTube** <https://youtu.be/kR5vYy5oals>

 <https://tinyurl.com/MenLikeTrees>

# *Davao Accelerator*



In July 2024, our mission took a bold step with the Davao City Seminary Gate project, aiming to create a dynamic academic and cultural center on Samal Island. With a 100-hour accelerator program running from July 25-31, this initiative was launched in partnership with the Global Expeditionary Award (GEA) and our GBG Artists-in-Residency program, led by Fine Arts Director Mart ("Macky") Henry Bongabong. Over the next decade, this project seeks to establish Samal Island as a creative and spiritual hub, blending theological studies, arts, and the island's natural beauty.

## **Key Goals & Milestones:**


- **Establishment of the Art House:** An extension of King's College's fine arts department, this Art House will foster cultural exchange and creative expression.
- **Specialized Facilities:** Planned additions include a pottery studio, a dive shop, and a sea-view café and clinic.
- **Innovative Programs:** Students will engage in M.A. (Theology) studies, enhanced by marine sports and art programs, merging academic rigor with hands-on creative experience.

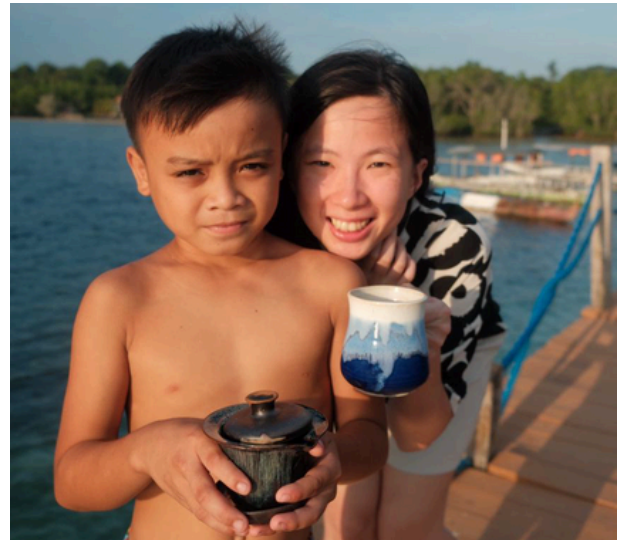
## **Explore more:**

 <https://tinyurl.com/Missional-Lead>

The 100-hour program included a retreat at Hagimit Falls, where participants explored leadership through creative expression, followed by an intensive academic session in Davao City on advanced theological research. This holistic approach enhances our academic mission while fostering creativity, spiritual growth, and community engagement. This visionary project utilizes Samal Island's unique resources to enrich theological education and cultural exchange well into the future.



 **YouTube** <https://youtu.be/kR5vYy5oals>



**Explore more:**

 <https://tinyurl.com/1Cor14-26>

# *Healing* Through Making

The healing journey takes tangible form through the art of making. Whether molding clay or painting, each creative gesture becomes a step toward wholeness, where the process of crafting mirrors our own restoration.



**Explore more:**

 <https://tinyurl.com/gbgx-celerator>

# Official Opening of Neighbourhood Pottery

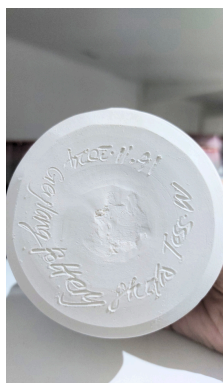
16th Nov

Celebrating new beginnings: Bishop Mike and Tess Wieteska, together with Reverend Gerard and Lianne Seow, and community partners Paul and Geoffrey from E7K, mark the joyful opening of Neighbourhood Pottery studio



Explore more:

 <https://tinyurl.com/Meta360Wall>





## *Preceptorship*

This past year has been transformative for our "Healing Through Making" ministry. By combining pottery-making with spiritual formation, we've seen remarkable growth in both individuals and our community. Through our partnership with Neighbourhood Pottery Studio, this program has become central to our community outreach and discipleship.

### **Program Overview**

Our ministry creates a unique space blending hands-on pottery instruction with biblical teaching. Accredited by King's College Seminary & Oikos Associates Trust House (OATH), we've developed a program that nurtures spiritual and practical development, aligning with our church's mission.

### **Spiritual Foundation**

Our ministry draws inspiration from Scripture, especially the imagery of God as the divine potter forming man from clay. This metaphor guides our approach to spiritual formation, reflecting our ongoing shaping by the Creator. Our curriculum incorporates the spiritual gifts from Romans and Corinthians, emphasizing stewardship in serving others and building up the body of Christ.

### **Neighbourhood Pottery Studio**

"Just as clay must be centered, worked, and refined through fire, so too must the human spirit undergo similar processes of molding and transformation."



## Core Program Components

### *Spiritual Formation Track*

Our curriculum follows a divinely inspired progression that mirrors both the pottery-making process and the spiritual journey. Through the Centering phase, participants establish their spiritual foundations and identity in Christ, learning to center themselves in His presence just as clay centers on the wheel. The Formation phase develops character through hands-on experience, allowing individuals to be shaped by God's word and Spirit. In the Trimming phase, participants experience spiritual refinement and growth as excess falls away, leading to the Finishing phase where their learning becomes integrated into daily life and ministry.

### *Biblical Studies Integration*

The program's academic component delves deeply into God's word through comprehensive Interlinear Studies, enabling participants to engage with Scripture in its original languages and discover nuanced meanings that enrich their spiritual understanding. Our study of Biblical Modalities acknowledges and embraces the diverse ways God works in different individuals, while our Reconciliation Studies examine conflict resolution through a biblical lens, fostering peace-making within our community.

### *Community Impact*

Throughout this year, we have witnessed the beautiful unfolding of God's work through this ministry. Strong community bonds have formed through shared creative experiences, as participants journey together in their spiritual growth. Individual testimonies speak to the discovery and development of God-given talents, while our International Student Advisory Council has facilitated meaningful cross-cultural connections that extend our church's influence beyond geographical boundaries.



## Explore more:

 <https://tinyurl.com/KC-Preceptorship>

### *International Outreach*

Our Distance Education Framework has enabled us to share God's love and creative spirit across borders. Through carefully cultivated partnerships with local pottery studios and established virtual learning communities, we've created a network of support and mentorship that spans Asia. This expansion has allowed us to touch lives and foster spiritual growth in communities we might never have reached otherwise.

### *Looking Forward*

As we step into the coming year, our vision remains firmly focused on expanding our community impact while deepening the integration of spiritual formation and creative practice. We seek to strengthen our international partnerships and develop innovative ways to serve our community through this unique ministry. Our commitment to this work stems from our conviction that creative practices can serve as powerful tools for spiritual formation and community building.

### *Acknowledgments*

We give thanks to God for His continued guidance and blessing on this ministry. Our hearts are filled with gratitude for our dedicated instructors and spiritual mentors who pour themselves into this work, for Neighbourhood Pottery Studio's unwavering partnership, and for our international partners who extend our reach. Most importantly, we thank our church community for their faithful support and active participation in this ministry.

As we reflect on this year's journey, we see clearly how God continues to mold and shape our community through this creative ministry, demonstrating His faithfulness in using innovative approaches to deepen discipleship and extend our outreach. We look forward with eager anticipation to witness His continued work through this unique expression of His creative spirit in our midst.



# CREATIVITY. COURAGE. CHANGE.

WHERE CREATIVITY BECOMES REVOLUTION

Transforming Arts.  
Rebuilding Lives.  
Reimagining Futures.



From Davao City Seminary Gate emerges a vision that reshapes art, community and human potential.

## A Sanctuary of Possibility

On Samal Island, our creative arts program is more than instruction—it's a revolution. Here, every brushstroke, musical note, dance movement, and sculptural form becomes a language of hope, dissolving barriers and giving voice to silenced dreams.

We Transform:

- Artistic barriers
- Economic limitations
- Community narratives
- Human potential

## YOUR INVITATION TO EXTRAORDINARY

This isn't just support. This is a movement.

For more details, go to <https://tinyurl.com/Rock-Water>

Or email us at [7modalities.com@gmail.com](mailto:7modalities.com@gmail.com)

## Beyond Investment: A Movement

We invite you to architect a future where creativity becomes the most profound language of human resilience.

Your Impact Creates:

- Artistic pathways
- Community resilience
- Economic opportunity
- Hope

## The Mathematics of Hope

- 1 Workshop = 10 Lives Reimagined
- 1 Creative Space = Community Reborn
- 1 Investment = Endless Potential

# *Modalities*

It's all about you but you are not what it's all about.



# *Modalities* at Nations Gate



The "7 Modalities" paradigm, developed by Reverend Gerard, senior pastor of Oikos Fellowship in Singapore, is a framework designed to help individuals uncover and understand their unique "elemental self" or inherent gifts.

This program is rooted in a biblical approach, using the seven-branched menorah as a metaphor for personal development. Each branch represents one of seven "modalities" or archetypes, which Reverend Gerard believes align with unique personality traits, strengths, and ways to make a positive impact on the world.

The 7 Modalities program, offered through Gerard Seow's platform, [7Modalities.com](http://7Modalities.com), provides life-impact coaching intended for a diverse audience, including pastors, business leaders, and younger generations. It emphasizes self-awareness and mastery to unlock potential in both personal and professional spheres.

Through the program, participants are encouraged to "decode, define, and declare" the latent talents within themselves. This involves examining how one's life purpose and identity can contribute to a broader mission of service and transformation.



**Proverbs 4:7-9 NKJV**

“Wisdom is the principal thing; Therefore get wisdom. And in all your getting, get understanding. Exalt her, and she will promote you; She will bring you honor, when you embrace her. She will place on your head an ornament of grace; A crown of glory she will deliver to you.”



# Modalities

We help gifted individuals to discover genius by modalities

## SCIENTIST/FUTURIST

Discover - "learning the eye"

- Derive pleasure in unearthing and uncovering mystery and proclaiming this to the world
- Interactions with the world - broadcast
- Future forecast - connecting the dots
- Leadership style - restoring defaults
- Problem solving - occupy uncontested space
- Approach to Learning - re-engineer existing ideas
- Peer-to-peer Expression - give new vocab
- Energy source - push the envelope

## EDUCATOR/ESSENTIALIST

Teach - "learning the ears"

- Disciplined mindset
- Interactions with the world - imprint values
- Future forecast - synthesis from multiple sources
- Leadership style- cogent clarity
- Problem solving - end game
- Approach to Learning - disambiguation
- Peer-to-peer Expression - clarifies muddled water
- Energy source - reframes the question

## RESOURCE MANAGER/REALIST

Structure - "learning the neck"

- The driving force of resourcing for internal controls by reorganising, restructuring and prioritising
- Interactions with the world - seed for the sower
- Future forecast - spot and invest
- Leadership style - stewarding talent
- Problem solving - internal restructuring
- Peer-to-peer Expression - upscale to tipping point
- Energy source - keep short account

## EMERGENCY RESPONDER/INTERVENTIONIST

Rescue - "learning the heart"

- The driving force to rescue the fallen, rebuild boundaries broken by violence, neglect or carelessness
- Interactions with the world - first responder
- Future forecast - attitude over aptitude
- Leadership style - mentoring
- Problem solving - damage control
- Approach to Learning -on-the-job training
- Peer-to-peer Expression - associates in action
- Energy source - remove wounds

## TECHNICIAN/SPECIALIST

Serve - "learning the hands"

- Masterful Execution
- Interactions with the world - exceeds expectations
- Future forecast - anticipates future needs
- Leadership style - master craftsman
- Problem solving - performance review
- Approach to Learning -perfection
- Peer-to-peer Expression - competitive
- Energy source - pursuit of excellence

## THERAPIST/COACH

Bond - "learning the tongue"

- Masterful conversationalist by persuasion, inclusivity
- Interactions with the world - from experience
- Future forecast - widens inner circle
- Leadership style- fresh ideas to flow
- Problem solving - works winsomely
- Approach to Learning - inclusive dialogue
- Peer-to-peer Expression - performance coach
- Energy source - scaffolding

## LEADER/EXPANSIONIST

Agile - "learning the lead"

- Command and take charge
- Interactions with the world - expands core
- Future forecast - assembles team
- Leadership style - casts vision
- Problem solving - go big or go home
- Approach to Learning - going forward
- Peer-to-peer Expression - conviction not consensus
- Energy source - ground breaking ideas

# *Seminary Gate* with Nations Gate

The International Student Advisory Council (ISAC) serves as a dedicated support organization committed to empowering international students in their pursuit of theological education at King's College Seminary through innovative remote learning arrangements. This carefully designed distance education approach enables students to engage deeply with higher Christian education curriculum while maintaining their cultural connections and ministry commitments in their home countries. Through this flexible learning model, ISAC facilitates meaningful educational experiences that bridge geographical boundaries and create opportunities for spiritual and academic growth within students' local contexts.




## Explore more:

 **YouTube** SINGAPORE DAY ONE: Where did our feet take us?

 **YouTube** SINGAPORE DAY TWO: Grocery Adventures

 **YouTube** SINGAPORE DAY THREE: The Reason Why We're Here

 **YouTube** SINGAPORE DAY FOUR (Part 1): God's Hand in Southeast Asia

 **YouTube** SINGAPORE DAY FOUR (Part 2): The Glory Walk

 **YouTube** SINGAPORE DAY FIVE: Bonding with Pastor Gerry


 **YouTube** SINGAPORE DAY SIX: Exploring China town

 **YouTube** SINGAPORE DAY SEVEN: Pulau Ubin, Work, and Forced Rest

 **YouTube** SINGAPORE DAY EIGHT: (Part 1/3): Last Day!


 **YouTube** SINGAPORE DAY EIGHT (Part 2/3): Visiting Pipit

 **YouTube** SINGAPORE DAY EIGHT (Part 3/3): Back to Manila

 <https://tinyurl.com/kc-ISAC>

# *Nations* Gate

More than just a gathering space, it embodies a vision of unity where people from various nationalities and backgrounds find common ground in their faith journey in Christ.

 **YouTube** <https://youtu.be/Zp7jQJwQjY0>



*Where passion meets purpose: Our skills ministry*



*Bridging generations with love and care*



*The real Christmas spirit: Love in action*



*Faith knows no borders*



Taytay Missions



Iloilo Missions



Bacolod Missions



Palawan Missions



# From Vision to Victory: The Road Ahead

Every great achievement begins with a compelling vision, but the true measure lies in the steps we take to bring that vision to life.



# 7 Modalities and the Fathering Movement

The 7Modalities paradigm offers a promising approach to strengthening Asian families by shifting from a deficit-based model—where the focus is on addressing weaknesses or perceived failures—to a strengths-based approach, especially in fathering. In traditional Asian societies, where the role of the father has often been viewed through a lens of discipline and provision, the 7 Modalities framework encourages fathers to instead explore and celebrate their inherent strengths and unique gifts, fostering resilience and a positive identity within the family.

## **1. Self-Discovery and Identity:**

The 7 Modalities approach emphasizes self-discovery and an understanding of one's "elemental self," encouraging fathers to recognize and build on their natural strengths. This shift helps fathers model a healthy self-awareness for their children, showing them that every family member has unique contributions and strengths.

## **2. Strengths-Based Fatherhood:**

By viewing fatherhood through unique "modalities" or personal gifts, fathers can move beyond traditional deficit perspectives (like rigid discipline or financial provision) to roles that leverage their talents for nurturing and support. This includes qualities like emotional availability, adaptability, and leadership—aligned with the seven modalities.





This strengths-based approach to fathering, using the 7 Modalities paradigm, can reshape modern fatherhood by equipping fathers to build nurturing and resilient families. It enables Asian families to draw from cultural values while adapting to contemporary challenges.

### **3. Building Resilience through Positive Reinforcement:**

By focusing on their strengths and engaging deeply with their identity, fathers can foster a household environment where children feel valued and encouraged to develop their own potential. This approach helps children internalize a positive self-image, better equipping them to face challenges resiliently.

**Dad is good all the time,  
and all the time  
Dad is good.**

---

"When fathers shift from focusing on deficits to celebrating strengths, they don't just transform themselves—they transform generations."  
- Rev Gerard Seow

### **4. Community and Collective Growth:**

The 7 Modalities framework fosters community support, aligning with Asian values of collective well-being. By encouraging families, especially fathers, to embrace these principles, it strengthens bonds and resilience.

#### **Explore more:**

 <https://tinyurl.com/KC-masterplan>

 <https://tinyurl.com/Oikos-Regents>

# Looking Forward *in Faith*

As we reflect on the year past, we see not just memories, but milestones of God's faithfulness. Every smile shared, every prayer answered, every life transformed stands as a testament to His unwavering presence in our midst.

## **Our Journey Continues**

What began as individual stories has woven into a tapestry of community, purpose, and divine intervention. Through the church members' faithful service, generous giving, and steadfast prayers, lives have been restored; families have been strengthened; communities have been transformed; faith has been deepened and hope has been rekindled.

## **The Path Ahead**

As we step into the new year of 2025, we carry forward not just our achievements, but our calling. The story God is writing through our church family is far from complete. Every member, every gift, every act of service plays a vital role in His greater purpose.

The *Oikos* Fellowship

Shepherding Hearts;  
Shaping Leaders;  
Serving Nations



## **Together in His Purpose**

The pages of this report tell stories of God's faithfulness, but the greatest chapters are yet to be written. As we move forward together, we will remember that we are not just building a church – we are building *His Kingdom*.